



State Fair Insect collection

Growing an interest in entomology through science discovery

Stalking squash vine Borers, digging for bess beetles - these adventures can lead to creating an insect collection that is eligible for youth to enter in the North Carolina State Fair. Show off your entomology skills by building a collection to enter in the State Fair Insect Collection. You can participate in two different classes; Class 107: General Insect Collection or Class 108: Special Exhibits.

Class 107: 4-H Entomology Insect collection

Age Divisions

- Cloverbuds 5-7 years (All youth will receive a green cloverbud ribbon only for entering)
- Juniors 8-13 years
- Seniors 14-18 years

Rules and Regulations

1. The entrant should be currently enrolled in the North Carolina 4-H Program.
2. Those planning to exhibit should submit form to State Fair Entry Office by date assigned in premium book.
3. The display boxes must be a minimum of 6.5" by 8.5" and a maximum of 19" by 25", made out of any material and have a glass or plexiglass cover. For more information see: go.ncsu.edu/4-H_Insects.
4. The collection must be the work of the exhibitor.
5. Winning first place eliminates the insect collection from further competition in this class.

Criteria for Judging

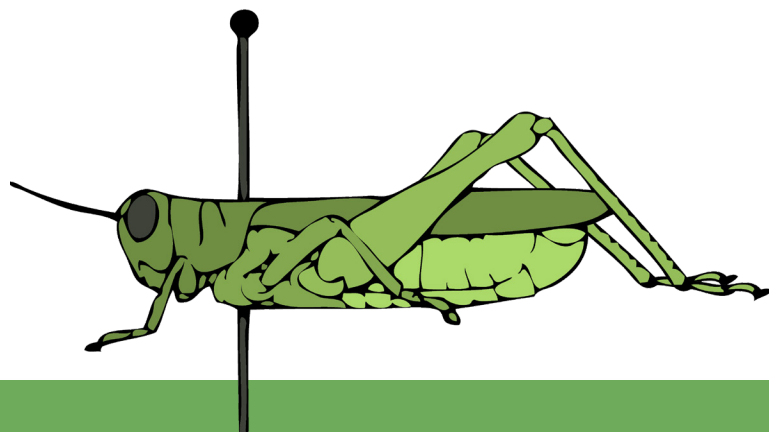
- General appearance and neatness of arrangement.
- Care in preparation of the insects key
- Correct placement and completeness of labels
- Number of orders and specimens of insects correctly identified
- Insects collected by someone other than the 4-H'er are acceptable, if pinned, labeled, and mounted by the 4-H'er. The true collector's name should be on the label. The majority of the insects must be collected by the 4-H'er.

Premiums

- All cloverbuds receive a ribbon only.
- Junior & Senior: 1st - \$50, 2nd - \$20, 3rd - \$10, 4th & 5th - \$5

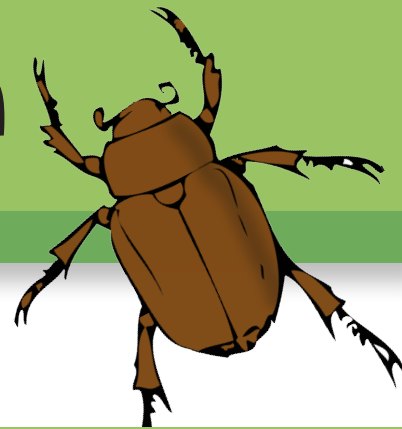


A budding entomologist shows off her specimen of a cicada killer.



State Fair Insect Collection

Growing an interest in entomology through science discovery



Class 108: 4-H Entomology SPECIAL STUDY or EXHIBIT

Age Divisions

- Cloverbuds 5-7 years (All youth will receive a green cloverbud ribbon only for entering)
- Juniors 8-13 years
- Seniors 14-18 years

Rules and Regulations

1. The entrant should be currently enrolled in the North Carolina 4-H Program.
2. Those planning to exhibit should submit form to State Fair Entry Office by date assigned in premium book.
3. Material in this class may consist of insect specimens, damage, nests, control procedures, pertinent written statements or descriptions, etc. It should tell a story about some central theme or objective.
4. The display boxes must be a minimum of 6.5" by 8.5" and a maximum of 19" by 25", made out of any material and have a glass or plexiglass cover. For more information see: go.ncsu.edu/4-H_Insects.
5. The collection must be the work of the exhibitor.
6. Winning first place eliminates the insect collection from further competition in this class.

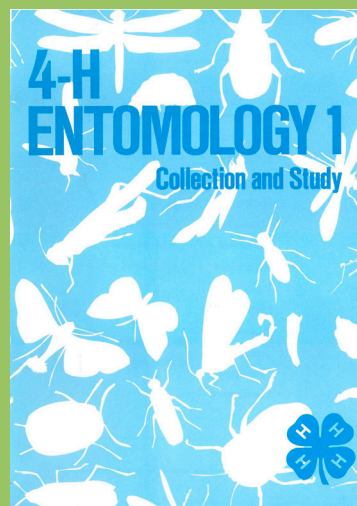
Criteria for Judging

- General appearance and neatness of arrangement
- Care in preparation of the insects
- Scientific, educational, and artistic merit
- Adherence to a central theme or objective
- Insects collected by someone other than the 4-H'er are acceptable, if pinned, labeled, and mounted by the 4-H'er. The true collector's name should be on the label. The majority of the insects must be collected by the 4-H'er.

Prizes

- All cloverbuds will receive a ribbon only.
- Juniors & Seniors: 1st - \$50, 2nd - \$20, 3rd - \$10, 4th & 5th - \$5

Insect collecting Resources

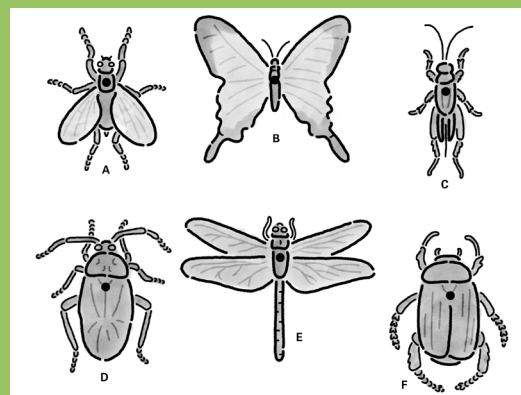


Visit: go.ncsu.edu/4-H_Insects for more resources!

4-H Entomology 1

This resource details how to collect and identify insects for your collection.

Download it here.



How to Pin and Label Adult Insects

Use this guide as a starting point for learning how to correctly pin and label adult insects in your collection.



NC STATE

EXTENSION

North Carolina 4-H Crop and Soil Science, Entomology and Plant Pathology, and Horticultural Science

Contact: Liz Driscoll, 4-H Youth Specialist
NC Cooperative Extension | NC State University,
168 Kilgore Hall, Box 7609, Raleigh, NC 27695
office: (919) 513-7346 / email: liz_driscoll@ncsu.edu